

Y-CON
INDUSTRIAL

INDUSTRIAL RJ45
CONNECTORS
Y-CON





WORLDWIDE SITES

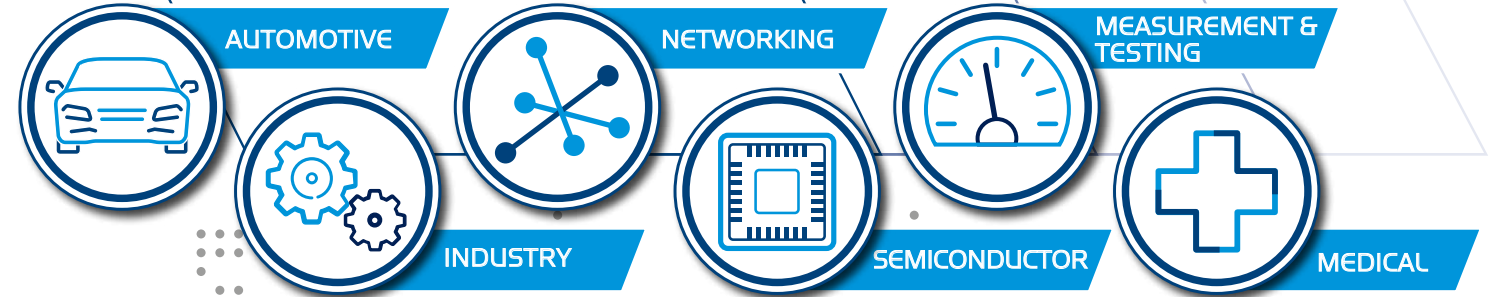


ASIA HQ Tokyo Japan, founded 1956
(Listed in the first section of the Tokyo Stock Exchange)
 Design Center: 1
 Sales Office: 11
 Manufacturing Site: 8 **20**

EMEA HQ Munich Germany, founded 1986
 Design Center: 2
 Sales Office: 5
 Manufacturing Site: 1 **8**

AMERICAS HQ San Jose CA. USA, founded 1983
 Design Center: 1
 Sales Office: 1
 Manufacturing Site: 1 **3**

MARKETS



WORLDWIDE EMPLOYEES



GROUP 2.309 in production
 325 in engineering **3.280**

EMEA 130 in production
 110 in engineering **385**

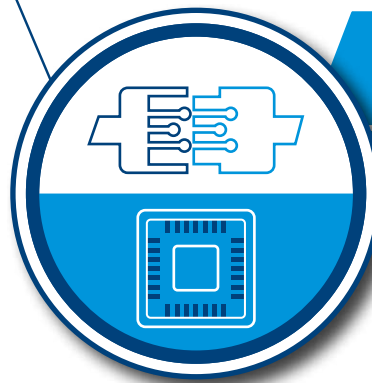
ANNUAL SALES



GROUP 333 Mio. Euro

EUROPE 104.8 Mio. Euro

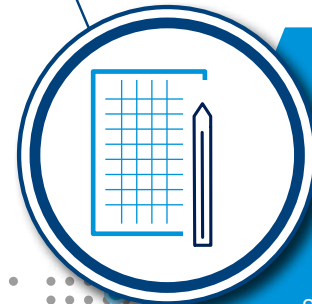
DIVISIONS



CONNECTOR SOLUTIONS
 Standard & customised connectors, cable assemblies

TEST SOLUTIONS
 Test & burn-in sockets, test contactors, module test adapters, PCB design

DESIGN CENTER



- Complex 3D CAD Construction
- Design FMEA
- Analysis using FEM
 - Structural Mechanics
 - Moldflow for Plastics
 - Thermal Simulation (Flow & Static)
 - Signal Integrity
- PCB Design
- Circuit Simulation
- High Resolution 3D Prototyping
 - Plastics (Photo Polymeric)
 - Metal (LMF Laser Metal Fusion)
- In-house Sample Construction

TEST LABORATORY

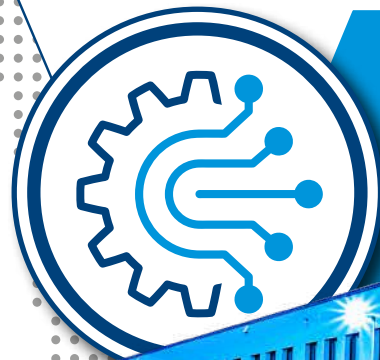


- High Voltage & High Current Testing
- High Frequency Measurements
- Soldering
- SEM (Scanning Electron Microscope)
- EDX (X-Ray spectroscopy)
- Computer Tomography / X-Ray
- X-Ray Fluorescence Spectrometer
- De-Rating

ENVIRONMENT

- Climatic & Temperature Chambers
- Mixed Gas (4 Gases) Testing
- Shock and Vibration Chamber
- Corrosion Tester
- IP Testing
- Bending-Rotation Tester

MANUFACTURING



In our production facility in Frankfurt (Oder) Germany, we manufacture connectors and cable assemblies as well as test contactors on 5,148 m².

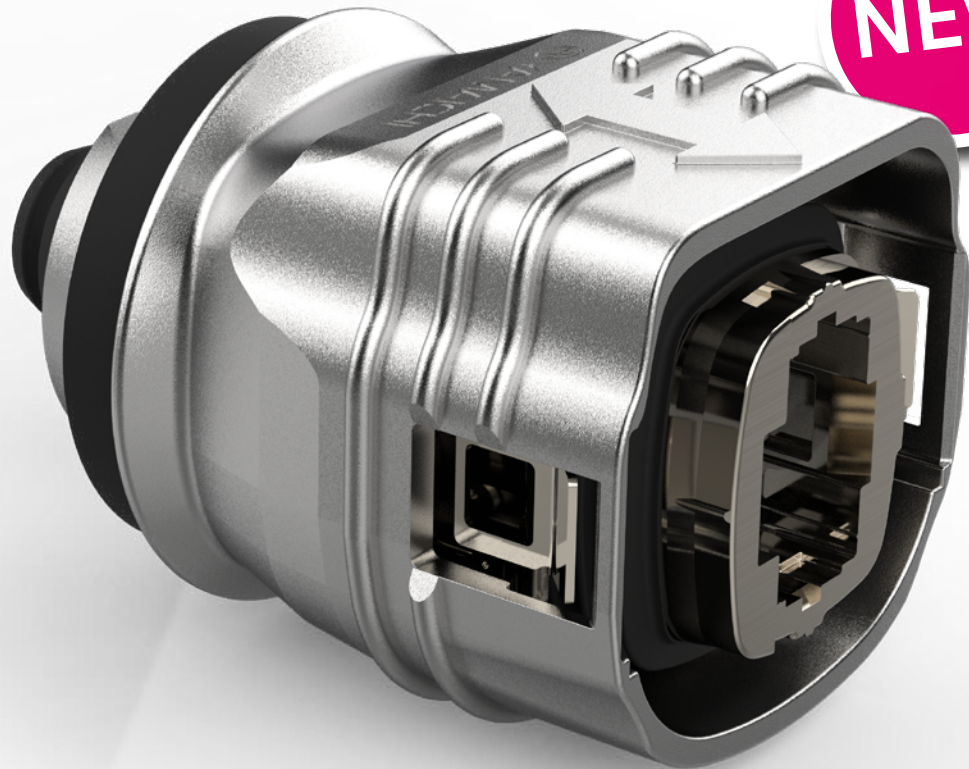




Y-CON

SERIES Y-CON COVER

Y-CON COVER 40 PUSH-PULL



NEW

DESCRIPTION

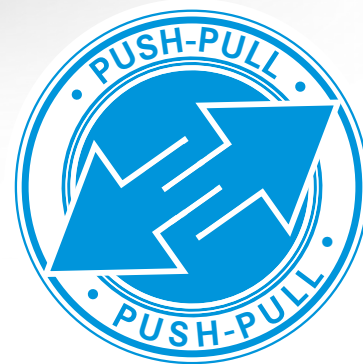
IP67/68/69K metal cover for self-assembly with Y-Con plugs and cables, with Push-Pull functionality, complete with latches, seals and terminator cap.

MATERIAL

- Body Die-cast zinc
- Seal FKM
- Fixing clips Stainless steel

SPECIFICATIONS

- Operating Temp. Std. - 20 °C ~ +120 °C



Y-CON

SERIES Y-CON COVER

Y-CON FLANGE 40 / 40-C

DESCRIPTION

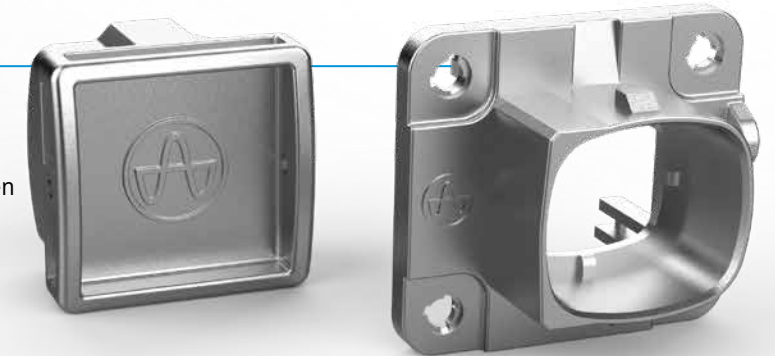
Universal mounting flange with integrated seals (also in the screw area) to ensure IP67/68/69K protection when mounted with Y-ConCover-10 and Y-ConCover-40 PP.

MATERIAL

- Flange Body Die-cast zinc
- Flange Seal HNBR
- Protection Cap Die-cast zinc
- Seal HNBR
- Wire Rope Steel / Aluminium

SPECIFICATIONS

- Operating Temp. -40 °C ~ +120 °C



Y-CON COVER-20-TC

DESCRIPTION

IP20 metal connector housing for applications with high demands on mechanical strength and high EMC protection. Easy and quick to lock, no more screws needed. Usable for several cable diameters min. 6.1 mm - max. 7.1 mm. For use with all Y-Con plugs.

MATERIAL

- Cover Die-cast zinc

SPECIFICATIONS

- Operating Temp. -40 °C ~ +120 °C



Y-CON TOOL-40

DESCRIPTION

Assembly aid for Y-ConCover-40-PP ensures easy handling and protects the plated surface

MATERIAL

- Anodized aluminum





Y-CON

SERIES Y-CON COVER

Y-CON COVER 10/10-E

DESCRIPTION

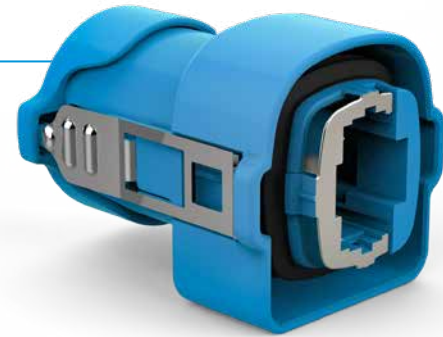
IP67/68/69K cover for self assembly with Y-Con plugs and cables, complete with latches, seals and terminator cap EMI version with metal spring for improved EMI protection.

MATERIAL

- Body PBT, UL94V-0
- Seal FKM or HNBR
- Fixing clips Stainless steel

SPECIFICATIONS

- Operating Temp. Std. - 20 °C ~ +120 °C



Y-CON FLANGE 10

DESCRIPTION

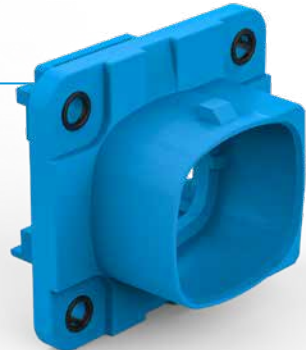
Universal mounting flange with an integrated seal (also in the screw area) to ensure IP67/68/69K protection when mounted with Y-ConCover-10 and Y-ConCover-40.

MATERIAL

- Body PBT, UL94V-0
- Seal FKM or HNBR
- Fixing clips Stainless steel
- EMI Spring Brass

SPECIFICATIONS

- Operating Temp. Std. - 20 °C ~ +120 °C



Y-CON COUPLER

DESCRIPTION

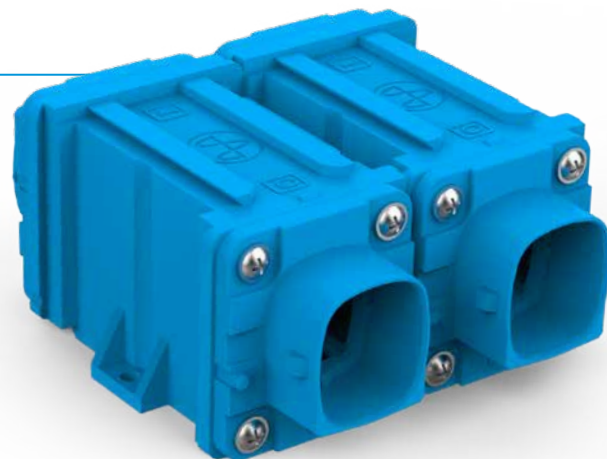
IP67 / IP68 coupler module (w/o electronics) screw mount, guide rails for modular assembly.

MATERIAL

- PBT

SPECIFICATIONS

- Operating Temp. -20 °C ~ +120 °C



Y-CON

Y-CON PLUG

SERIES Y-CON PLUG

DESCRIPTION

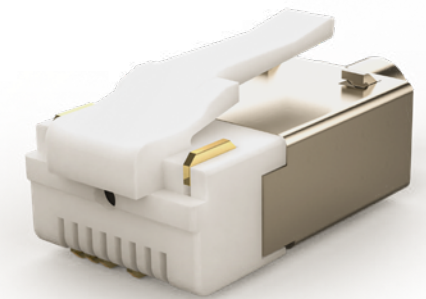
RJ45 cable plug, 100MBit / CAT5 with integrated insert, shielding and cable crimp preventing cable rotation. 4 / 6 / 8 contacts for Ethernet / customised contact wiring with optional power contacts. Profinet version with AWG 22 available.

MATERIAL

- Plug body PBT
- Shielding Nickel plated brass
- Contact Contact area 30 μmAu over Ni

SPECIFICATIONS

- Operating Temp. -40 °C ~ +120 °C
- Durability 1,500 mechanical cycles
- Current Rating 2.1 A @ 70 °C (power contacts)



Y-CON PLUG CAT6_A

DESCRIPTION

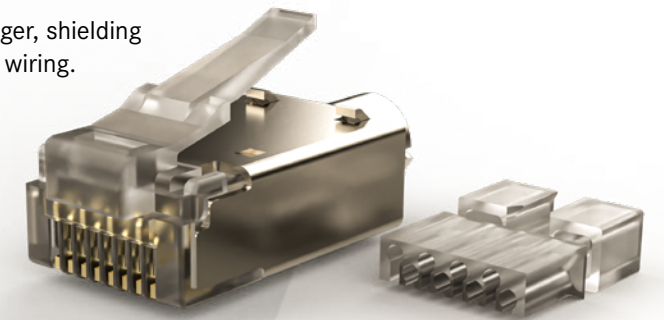
RJ45 cable plug, Cat6_A with integrated insert and wire manager, shielding and cable crimp preventing cable rotation. Ethernet contact wiring.

MATERIAL

- Plug body PC
- Shielding Nickel plated brass
- Contact Contact area 30 μmAu over Ni

SPECIFICATIONS

- Operating Temp. -40 °C ~ +120 °C
- Durability 1,500 mechanical cycles



Y-CON PROFIX PLUG

DESCRIPTION

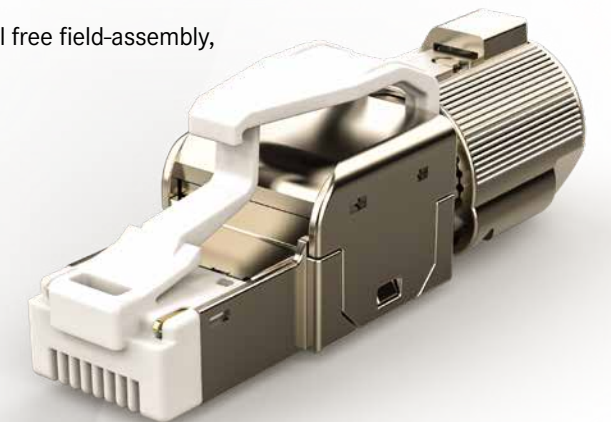
RJ45 cable plug, Cat5 and Cat6_A with integrated wire manager, tool free field-assembly, variable cable diameters, with optional power contacts.

MATERIAL

- Plug body PA
- Shielding Nickel plated brass
- Contact Contact area 30 μmAu over Ni

SPECIFICATIONS

- Operating Temp. -40 °C ~ +120 °C
- Durability 1,500 mechanical cycles
- Current Rating 3.1 A @ 70 °C (power contacts)
- AWG 22 - 26 Solid wire
- AWG 22 - 26 Stranded wire
- Cable Diameter 6.8 mm ~ 9.25 mm





Y-CON

Y-CON ACCESSORIES

Y-CON AS-12

DESCRIPTION

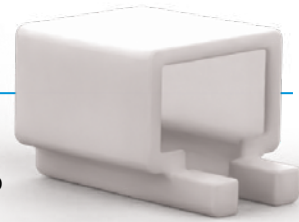
IP20 protective transport cap for use with all Y-Con plugs.

MATERIAL

- Body PE
- Colour Transparent white
- Seal IP20

SPECIFICATIONS

Operating Temp. -20 °C ~ +80 °C



Y-CON AS-11

DESCRIPTION

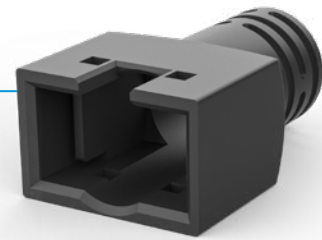
IP20 strain relief for use with all Y-Con plugs.

MATERIAL

- Cover PA66

SPECIFICATIONS

• Operating Temp. -20 °C ~ +120 °C



Y-CON AS-21 PROTECTION CAP IP 67

DESCRIPTION

IP67 protective transport cap for Y-ConCover-10 and Y-ConCover-40

MATERIAL

- Body PE
- Colour Transparent white
- Seal IP67

SPECIFICATIONS

• Operating Temp. -20 °C ~ +80 °C



Y-CON AS-24 PROTECTION CAP IP 67 / 68

DESCRIPTION

IP67/68 protective cover for Y-ConFlange-10.

MATERIAL

- Body PE
- Colour Transparent white
- Seal IP67 / IP68

SPECIFICATIONS

• Operating Temp. -20 °C ~ +80 °C



Y-CON FLANGE-PUNCH-1

DESCRIPTION

Manual punch to stamp out the Y-ConFlange panel cut with matrix for 4 screw holes. For V2A plate metal up to 2.0 mm (Rockwell 56-58).

MATERIAL

- Steel (black)



Y-CON PROFIX PLUG-INS

DESCRIPTION

Wire manager Y-ConProfixPlug-INS-11 for wires max. ϕ 1.1 mm
Wire manager Y-ConProfixPlug-INS-17 for wires max. ϕ 1.7 mm

SPECIFICATIONS

AWG 22 - 26 Solid wire
AWG 22 - 26 Stranded wire



Y-CON

ASSEMBLY TOOLS

Y-CON TOOL-11 / -13

DESCRIPTION

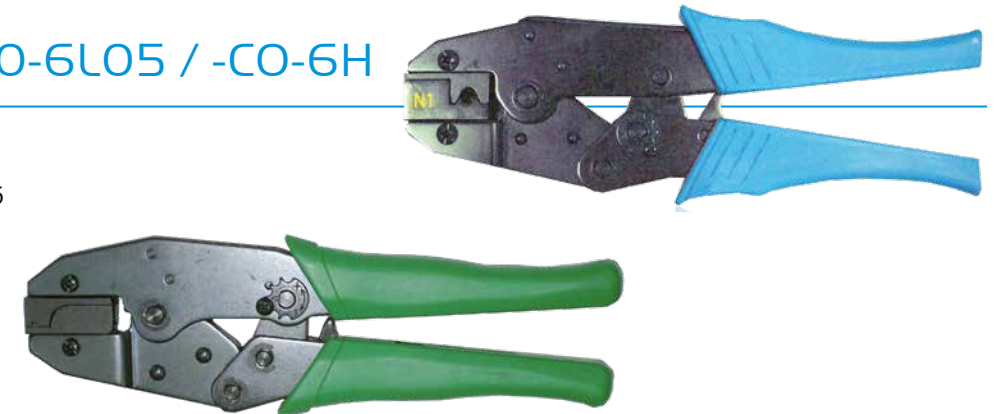
Square crimp tool for all Y-Con plugs.
Tool-11 front insertion
Tool-13 side insertion



RJ45 TOOL CO-6L05 / -CO-6H

DESCRIPTION

Crimp tool for standard RJ45 plugs Cat5, Cat6, Cat6_A.



Y-CON TOOL-20

DESCRIPTION

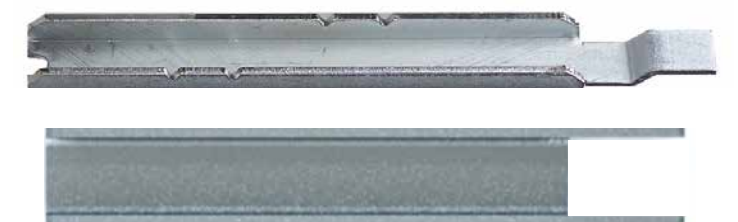
Cable stripping tool with adjustable blades for 4, 6, 8 and 12 mm cable diameter.



Y-CON TOOL-30 / -31

DESCRIPTION

Assembly of inserts into the Y-Con Plug Base 100MBit/CAT5
Y-Con Plug Base CAT6_A.



Y-CON IP20 HFR

DESCRIPTION

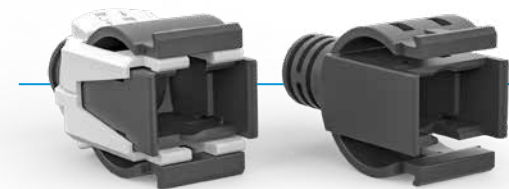
IP20 holding frames 1x, 2x or 4x format.
For use with all RJ45 and USB IP20 Lock products.

MATERIAL

- PA66 (Black)

SPECIFICATIONS

- Operating Temp. -20 °C ~ +120 °C



Y-ConIP20Lock-20

Y-ConIP20Lock-10

Y-CON IP20 LOCK-X0

DESCRIPTION

IP20 lock 180° strain relief with vibration resistant locking clips. Also available with additional locking slider for increased mechanical retention. For use with all Y-Con plugs.

MATERIAL

- PA66 (Black)

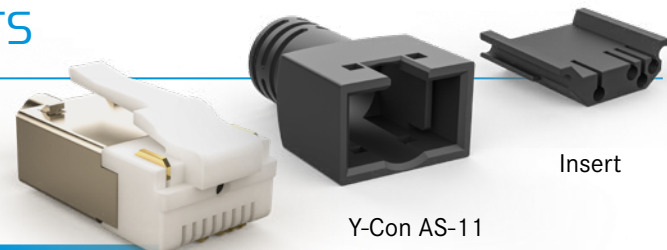
SPECIFICATIONS

- Operating Temp. -20 °C ~ +120 °C

Y-CON KIT - IP20 FIELD KITS

DESCRIPTION

IP20 RJ45 Field kit for self-assembly



Insert

Y-Con AS-11

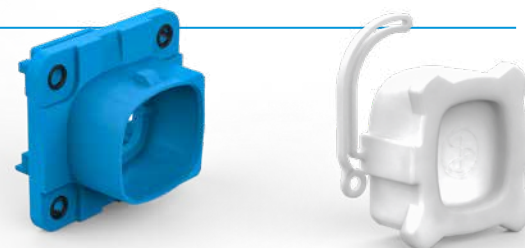
Y-ConPlug

Part Number	Plug	Strain Relief	Signal Contacts	Power Contacts
Y-ConKit-10	Y-ConPlug-11	Y-ConAS-11	4	0
Y-ConKit-11	Y-ConPlug-21	Y-ConAS-11	4	2
Y-ConKit-12	Y-ConPlug-51	Y-ConAS-11	8	2
Y-ConKit-13	Y-ConPlug-31	Y-ConAS-11	6	2
Y-ConKit-14	Y-ConPlug-41	Y-ConAS-11	8	0

Y-CON KIT - IP67 / 68 / 69K FLANGE FIELD KITS

DESCRIPTION

IP67/68/69K RJ45 Flange Field kit for self-assembly.



Y-ConFlange-10

Y-ConFlange-10-B (black)

Y-ConAS-24

Part Number	Flange	Protection Cap
Y-ConKit-30	Y-ConFlange-10	Y-ConAS-24
Y-ConKit-30-B	Y-ConFlange-10-B	Y-ConAS-24

Y-CON KIT - IP67 / 68 / 69K FIELD KITS

DESCRIPTION

IP67/68/69K RJ45 Field kit for self-assembly. Also available in black and as a low temperature variant down to -40°C.



Y-ConCover-10

Y-ConCover-10-B (black)

Y-ConAS-22

Y-Con Stopper

Y-ConAS-23

Y-ConAS-23-B (black)

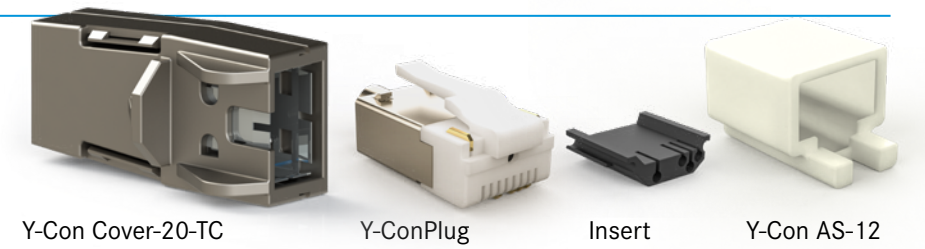
Y-ConPlug Insert

Part Number	Cover	Plug	Signal Contacts	Power Contacts
Y-ConKit-20	Y-ConCover-10	Y-ConPlug-11	4	0
Y-ConKit-21	Y-ConCover-10	Y-ConPlug-21	4	2
Y-ConKit-23	Y-ConCover-10	Y-ConPlug-31	6	2
Y-ConKit-24	Y-ConCover-10	Y-ConPlug-41	8	0
Y-ConKit-26	Y-ConCover-10	Y-ConPlug-51	8	2

Y-CON KIT - IP20 METAL FIELD KITS

DESCRIPTION

IP20 RJ45 Field kit for self-assembly.



Y-Con Cover-20-TC

Y-ConPlug

Insert

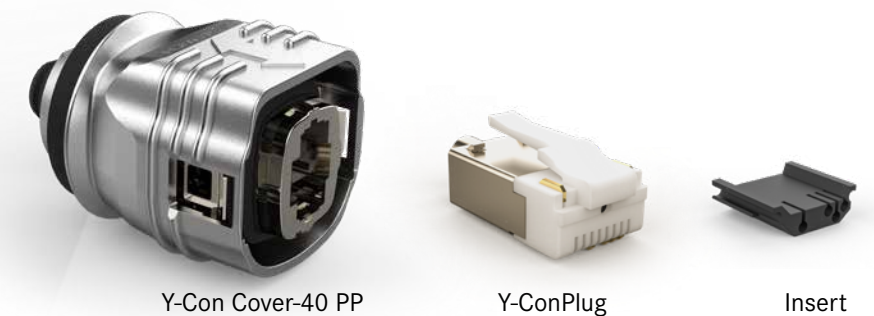
Y-Con AS-12

Part Number	Cover	Plug	Strain Relief	Signal Contacts	Power Contacts
Y-ConKit-Cov-20-TC-PL11	Y-ConCover-20-TC	Y-ConPlug-11	Y-ConAS-12	4	0
Y-ConKit-Cov-20-TC-PL21	Y-ConCover-20-TC	Y-ConPlug-21	Y-ConAS-12	4	2
Y-ConKit-Cov-20-TC-PL51	Y-ConCover-20-TC	Y-ConPlug-51	Y-ConAS-12	8	2

Y-CON KIT - IP67 METAL FIELD KITS

DESCRIPTION

IP67/68/69K RJ45 Field kit for self-assembly.



Y-Con Cover-40 PP

Y-ConPlug

Insert

Part Number	Cover	Plug	Signal Contacts	Power Contacts
Y-ConKit-Cov-40-PP-PL11	Y-ConCover-40-PP	Y-ConPlug-11	4	0
Y-ConKit-Cov-40-PP-PL21	Y-ConCover-40-PP	Y-ConPlug-21	4	2



Y-CON

Y-CON RJ45 CABLE ASSEMBLIES

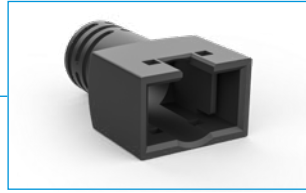
POSSIBLE COVER VARIATIONS



IP6+ plastic cover



IP6+ metal and overmolded metal cover



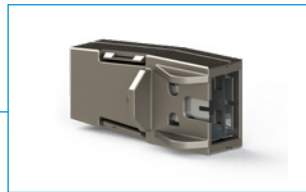
IP20 strain relief



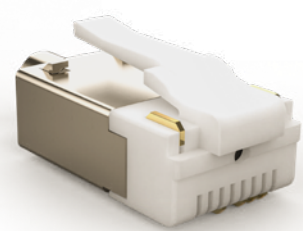
IP20Lock strain relief



IP20Lock 90° overmolded



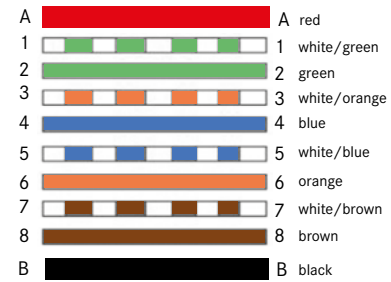
IP20 metal cover



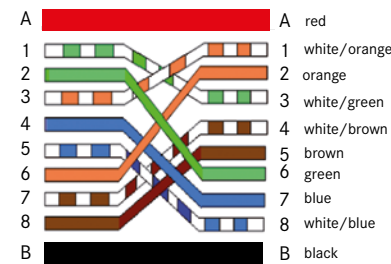
Y-ConPlug for all these Y-Con covers

POSSIBLE WIRING DIAGRAMS

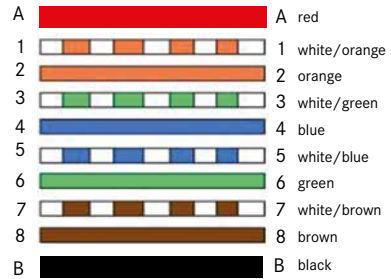
T568A 1 : 1



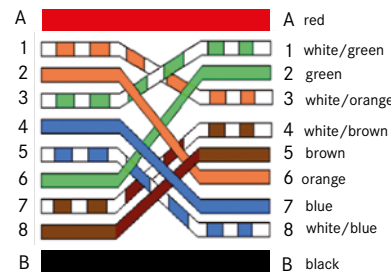
T568A Crossover



T568B 1 : 1



T568B Crossover



Note: Y-ConPlug-11, -12 and -31 use only signal contacts 1, 2, 3 & 6. A and B are optional power contacts



Y-CON

Y-CON CABLES

DESCRIPTION:

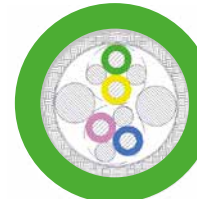
Cat5, digital signal cable, silicon free



Y-ConCable-1

Suitable for Y-ConPlug-21

Signal	Power	Jacket	Temp.	Cable OD	Cable Chain	Bending Radius	Bending Cycles
2 x 2	2	PVC	-20 °C ~ +80 °C	6.9 mm	No	125 mm multiple turns	max. 100,000
AWG 24 / 7 0.22 mm ²	AWG 22 / 19 0.38 mm ²	Green		(+0.1)		35 mm single turn	



Y-ConCable-2

Suitable for Y-ConPlug-11

Signal	Power	Jacket	Temp.	Cable OD	Cable Chain	Bending Radius	Bending Cycles
2 x 2	0	PVC	-20 °C ~ +80 °C	6.85 mm	No	min. 50 mm single turn	-
AWG 24/7 0.22 mm ²		Grey		(+/-0.15)			



Y-ConCable-3

Suitable for Y-ConPlug-21 and Y-ConProFixPlug-51

Signal	Power	Jacket	Temp.	Cable OD	Cable Chain	Bending Radius	Bending Cycles
2 x 2	2	PUR	-20 °C ~ +80 °C	6.8 mm	Yes	70 mm multiple turns	max. 2 million
AWG 26 / 7 0.14 mm ²	AWG 22 / 7 0.34 mm ²	Green		(+0.2)		35 mm single turn	



Y-ConCable-4

Suitable for Y-ConPlug-41 and Y-ConProFixPlug-53

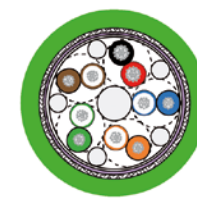
Signal	Power	Jacket	Temp.	Cable OD	Cable Chain	Bending Radius	Bending Cycles
4 x 2	0	PUR	-20 °C ~ +70 °C	6.8 mm	Yes	68 mm	max. 1 million
AWG 26/7 0.14 mm ²		Green		(+0.1/-0.3 mm)			



Y-ConCable-7 (PROFINET)

Suitable for Y-ConPlug-15

Signal	Power	Jacket	Temp.	Cable OD	Cable Chain	Bending Radius	Bending Cycles
4	0	PUR	-20 °C ~ +60 °C	6.7 mm	Yes	100 mm multiple turns	max. 2 million
AWG 22 / 7 0.34 mm ²		Green		(±0.2)			



Y-ConCable-10

Suitable for Y-ConPlug-51 and Y-ConProFixPlug-51

Signal	Power	Jacket	Temp.	Cable OD	Cable Chain	Bending Radius	Bending Cycles
4 x 2	2	PUR	-20 °C ~ +70 °C	6.9 mm	Yes	70 mm multiple turns	max. 1 million
AWG 26/7 0.14 mm ²	AWG 23/19 0.25 mm ²	Green		(+0.1/-0.3)			



Y-CON

Y-CON CABLES

DESCRIPTION:

Cat6_A, digital signal cable, silicon free (Acc. to IEC 61156-6)



CB-A04P26-0000-5069-G22XG

Suitable for Y-ConPrefixPlug-63

Signal	Power	Jacket	Temp.	Cable OD	Cable Chain	Bending Radius	Bending Cycles
4 x 2	0	PUR	-40 °C ~ +80 °C	6.9 mm	Yes	107 mm multiple turns	max. 1 million.
AWG 26/7		Green		(+/-0.20)		28 mm single turn	



CB-A04P26-0224-5069-G22UG

Suitable for Y-ConPrefixPlug-61

Signal	Power	Jacket	Temp.	Cable OD	Cable Chain	Bending Radius	Bending Cycles
4 x 2	2	PUR	-40 °C ~ +80 °C	6.9 mm	-	56.8 mm multiple turns	
AWG 26/7	AWG 24/19	Green		(+/-0.20)		28.4 mm single turn	



CB-A04P26-0000-5066-G12UL

Y-Con PO68APCSC-AT2468

Signal	Power	Jacket	Temp.	Cable OD	Cable Chain	Bending Radius	Bending Cycles
4 x 2	0	PVC	-20 °C ~ +80 °C	6.6 mm	-	53 mm multiple turns	
AWG 26/7		Green		(+/-0.30)		27 mm single turn	



Y-CON

Y-CON RJ45 JACKS

DESCRIPTION - ALL Y-CON JACKS

- Y-Con Jacks with optional magnetics, light pipes, power contacts and shield springs
- Light pipes enable the usage of the same jack for different LED colours
- For use with all Y-Con and RJ45 plugs
- Power contacts rating 2.1A @ 70°C

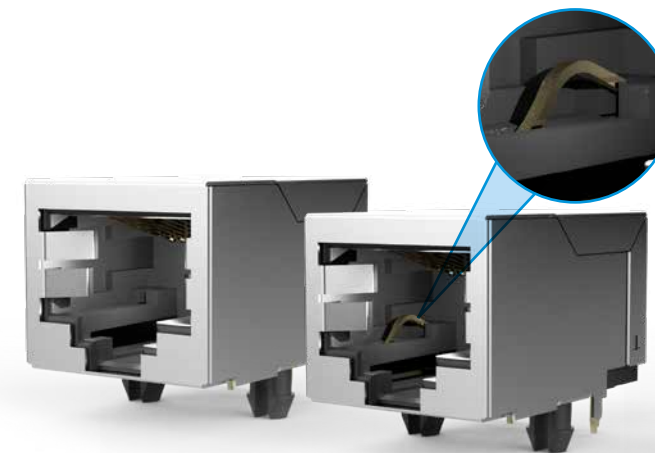
MATERIAL

- Jack body PA, UL94V-0
- Shielding Nickel plated brass
- Contact Contact area 30 μmAu / 50μmNi
Solder area 80 μmSn / 50μmNi

SPECIFICATIONS

- Operating Temp. -40 °C ~ +120 °C
- Durability 1,500 mechanical cycles
- Solder Temp. Reflow max. 260 °C / 10sec.
Wave min. 235 °C / 3sec.
(Y-ConJack-22- WAVE)
- Current Rating: 2.1A @ 70 °C (power contacts)

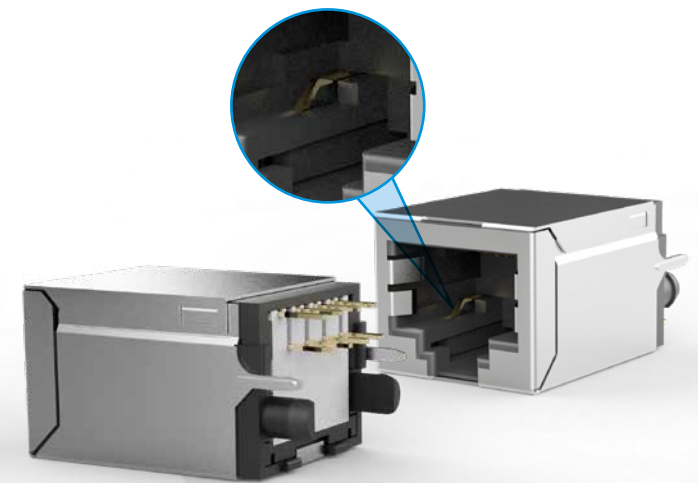
Y-CON JACK-11 / -21



90°

90° with power contacts

Y-CON JACK-12 / -22



180°

180° with power contacts

Y-CON JACK-3X / -5X



90° with magnetics

180° with magnetics

Y-CON JACK-6X / -7X



90° CAT6_A

180° with machine wound magnetics
optional light pipes



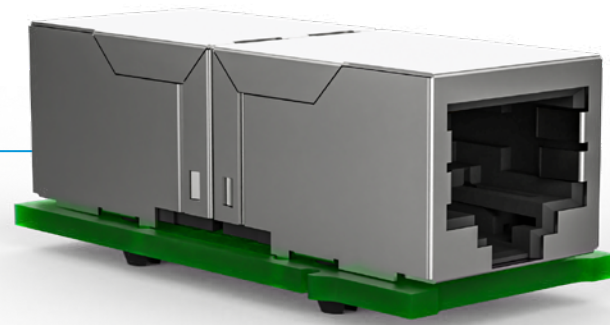
Y-CON

Y-CON RJ45 JACKS

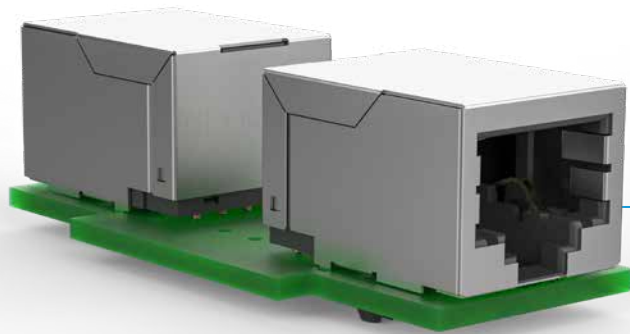
Y-CON JACK 15 /25

DESCRIPTION

RJ45 coupler jacks PCB mounted, with 4 pin crossover wiring, with or without power contacts. For use with Y-ConFlange-10, Y-ConFlange-40 and all Y-Con plugs.



Part Number	Signal Contacts	Power Contacts	Orientation	PCB
Y-ConJack-15	4	0	90°	Coupler Jack (wiring crossover)
Y-ConJack-25	4	2	90°	Coupler Jack (wiring crossover)



Y-CON JACK 25C /26C

DESCRIPTION

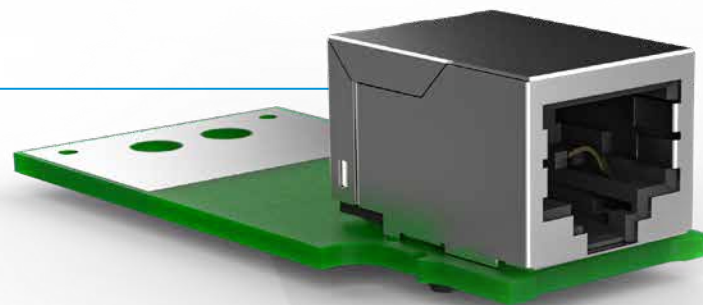
RJ45 coupler jacks PCB mounted, with 4 pin crossover wiring, with or without power contacts. For use with Y-Con Coupler-10 / -11.

Part Number	Signal Contacts	Power Contacts	Orientation	PCB
Y-ConJack-25C	4	2	90°	Coupler Jack (wiring crossover)
Y-ConJack-26C	8	2	90°	Coupler Jack (wiring 1: 1)

Y-CON JACK 13 /23

DESCRIPTION

RJ45 PCB mounted jacks for direct cable connection, with or without power contacts. For use with Y-ConFlange-10, Y-ConFlange-40 and all Y-Con plugs.



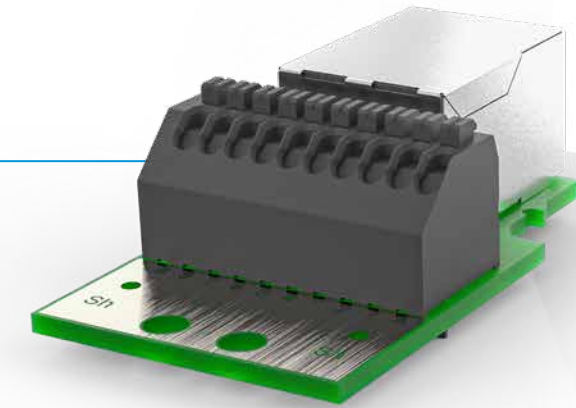
Y-CON

Y-CON RJ45 JACKS

Y-CON JACK 14 /24

DESCRIPTION

RJ45 PCB mounted jacks, with or without power contacts. For use with Y-ConFlange-10, Y-ConFlange-40 and all Y-Con plugs. For direct cable connection.



Part Number	Signal Contacts	Power Contacts	Orientation	PCB
Y-ConJack-13	8	0	90°	with solder pads
Y-ConJack-23	8	2	90°	with solder pads
Y-ConJack-14	8	0	90°	with terminals
Y-ConJack-24	8	2	90°	with terminals

Y-CON JACK 16 M

DESCRIPTION

RJ45 180° coupler Jack, with 8 pin 1:1 wiring, (including flange adapter and locking clip). For use with Y-ConFlange-10 or Y-ConFlange-40.

MATERIAL

- Jack body: PBT, UL94V-0
- Shielding: Stainless Steel
- Contact: Contact area Au/Ni
- Adapter / Locking Clip: PBT, UL94V-0
- Locking Clip: PA, UL94V-0

SPECIFICATIONS

- Operating Temp.: -20°C ~ +80°C
- Durability: 750 mechanical cycles



Adapter for Y-Con Jack-16KM



RJ45

Y-CON RJ45 STANDARD PLUGS

RJ45-P8805PC5C-AAT24

DESCRIPTION

RJ45 Plug shielded CAT5. Assembly with tool.

MATERIAL

- Plug body PC, UL94V-0
- Shielding Nickel plated brass
- Contact Phosphor bronze
- Contact area 30µ" Au over Ni



RJ45-PA5-05

DESCRIPTION

IP20 strain relief red, other colours on request.

MATERIAL

PVC



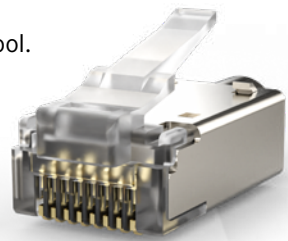
RJ45-P8806PC5C-AAT24

DESCRIPTION

RJ45 Plug shielded CAT6. Assembly with tool.

MATERIAL

- Plug body PC, UL94V-0
- Shielding Nickel plated brass
- Contact Phosphor bronze
- Contact area 30µ" Au over Ni



RJ45-PA5-06

DESCRIPTION

IP20 strain relief blue, other colours on request.

MATERIAL

ABS



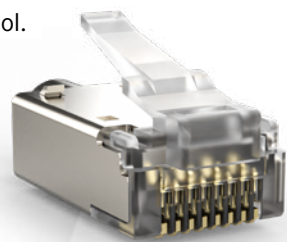
RJ45-P886APC5C-AAT24

DESCRIPTION

RJ45 Plug shielded CAT6A. Assembly with tool.

MATERIAL

- Plug body PC, UL94V-0
- Shielding Nickel plated brass
- Contact Phosphor bronze
- Contact area 30µ" Au over Ni



RJ45-PA5-06

DESCRIPTION

IP20 strain relief blue, other colours on request.

MATERIAL

ABS



PATCH CABLE

DESCRIPTION

STP cable PVC red, AWG24
Cable length 350mm.

MATERIAL

- Plating Flash Gold



RJ45

RJ45 STANDARD JACKS TS

MATERIAL - ALL JACKS TS

- Jack body High temp. thermoplastic, UL94V-0
- Shielding None
- Contact Phosphor bronze
- Contact Area 6µ" Au over Ni
- Solder Area Tin plating over Ni

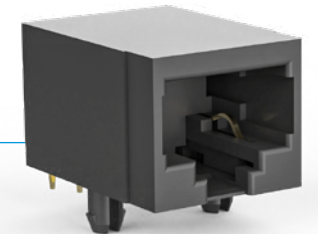
SPECIFICATIONS - ALL JACKS TS

- Durability: 1,000 mechanical cycles

TS6K88-5

DESCRIPTION

RJ45 Jack SMT 90° unshielded, tab down with 8 positions and 8 contacts, low profile.



TS30045T-881SMT-T&R

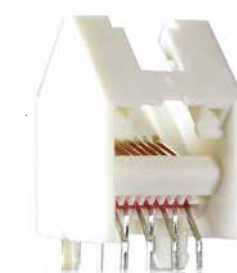
DESCRIPTION

RJ45 Jack SMT 90° shielded, tab down with 8 positions and 8 contacts.

TS30045MT-8P10C

DESCRIPTION

RJ45 Jack SMT 90° shielded, tab down with 10 positions and 10 contacts.



TS3030-881

DESCRIPTION

RJ45 Jack for wave soldering 45° unshielded, tab up with 8 positions and 8 contacts.

TS3046-881-LED-YG

DESCRIPTION

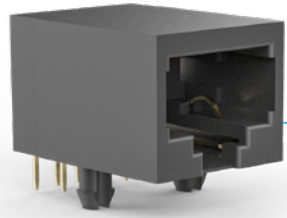
RJ45 Jack for wave soldering 90° unshielded, tab up with 8 positions and 8 contacts, LED yellow-green.





RJ45

RJ45 STANDARD JACKS TS



T56K88-A

DESCRIPTION

RJ45 Jack for wave soldering 90° unshielded, tab down with 8 positions and 8 contacts, low profile.

T530145-66-1

DESCRIPTION

RJ45 Jack for wave soldering 90° shielded, tab down with 6 positions and 6 contacts.



T530465-881

DESCRIPTION

RJ45 Jack for wave soldering 90° shielded, tab up with 8 positions and 8 contacts.

T530145-88-1

DESCRIPTION

RJ45 Jack for wave soldering 90° shielded, tab down with 8 positions and 8 contacts.



T53030-881R

DESCRIPTION

RJ45 Jack for wave soldering 180° shielded, with 8 positions and 8 contacts.



RJ45

RJ45 STANDARD JACKS TS

T5301751-8821

DESCRIPTION

RJ45 Jack for wave soldering 180° shielded, with 8 positions and 8 contacts.



T530615-881-GREEN-GREEN

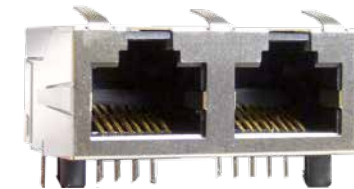
DESCRIPTION

RJ45 Jack for wave soldering 180° shielded, with 8 positions and 8 contacts, LED green-green.

T531015-881

DESCRIPTION

RJ45 Coupler Jack 180° shielded, with 8 positions and 8 contacts. 1:1 wiring.



T530465-02880ER

DESCRIPTION

RJ45 Double Port Jack (1 level x 2 ports) for wave soldering 90° shielded, tab up with 16 contacts and shield springs.

T530225-2881

DESCRIPTION

RJ45 Quad Port Jack (2 level x 2 ports) for wave soldering 90° shielded, tab up/down with 32 contacts and shield springs.





Y-CON FLANGE / Y-CON ADAPTER

SERIES Y-CON FLANGE 10/10B

DESCRIPTION

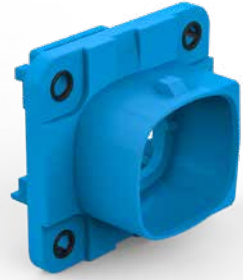
Universal mounting flange with an integrated seal (also in the screw area) to ensure IP67/68/69K protection when mounted with Y-ConCover-10.

MATERIAL

- Flange Body PBT, UL94V-0
- Flange Seal TPE, UL94 HB

SPECIFICATIONS

- Operating Temp. -40°C ~ +120°C



Part Number	Colour
Y-ConFlange-10	Blue
Y-ConFlange-10-B	Black

Y-CON USB-ADAPTER

DESCRIPTION

Y-ConFlange adapter modules for use with Y-ConUSB-PCB jacks.

MATERIAL

- PBT, black

SPECIFICATIONS

- Operating Temp.: -40°C ~ +120°C



Part Number	Adapter Use
Y-ConUSB-Adapter-10	for all USB-A modules
Y-ConUSB-Adapter-20	for all USB-B modules

Y-CON USB CABLE ASSEMBLIES

DESCRIPTION

Y-Con USB-A/-B, IP67/68/69K and IP20 cable assembly in various configurations.

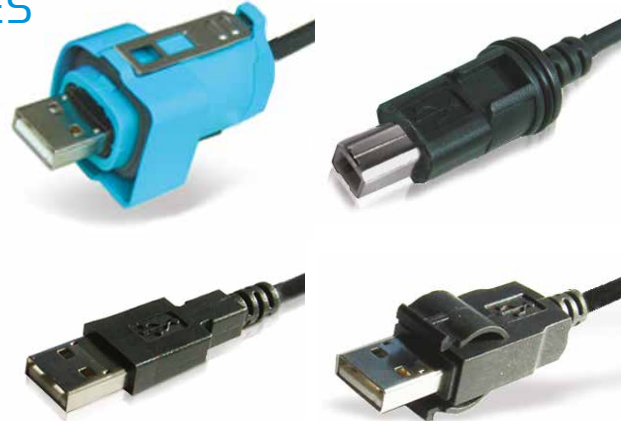
MATERIAL

- Cable Jacket: PUR, black

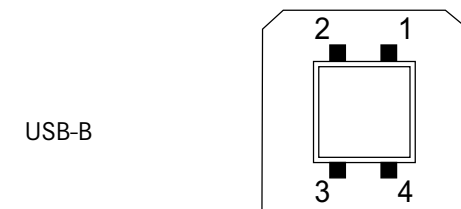
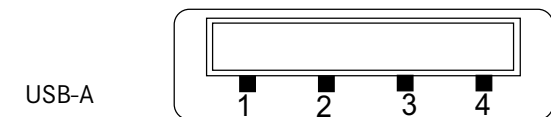
SPECIFICATIONS

- Operating Temp. -25°C ~ +80°C

Other cable lengths and raw cable specifications on request



WIRING INFORMATION (STANDARD)



Pin No.	Name	Color	Notes
1	VBUS	Red	Power
2	D-	White	Data - (Twisted pair)
3	D+	Green	Data + (Twisted pair)
4	GND	Black	Ground

Pin No.	Name	Color	Notes
1	VBUS	Red	Power
2	D-	White	Data -
3	D+	Green	Data + (Twisted pair)
4	GND	Black	Ground



Y-CON USB-PCB

Y-CON USB-PCB-11

DESCRIPTION

USB-A PCB mounted jack with PCB terminals¹⁾, including shield connection and fixing for cable straps. For use with Y-ConUSB-Adapter-10 and Y-ConFlange-10.

SPECIFICATIONS

- Operating Temp. -25°C ~ +80°C



Y-CON USB-PCB-12

DESCRIPTION

USB-A PCB mounted coupler jack, for use with Y-ConUSB-Adapter-10 and Y-ConFlange-10.

SPECIFICATIONS

- Operating Temp. -25°C ~ +80°C

Y-CON USB-PCB-21

DESCRIPTION

USB-B PCB mounted jack with PCB terminals¹⁾, including shield connection and fixing for cable straps. For use with Y-ConUSB-Adapter-20 and Y-ConFlange-10.

SPECIFICATIONS

- Operating Temp. -25°C ~ +80°C



Y-CON USB-PCB-22

DESCRIPTION

USB-B / USB-A PCB mounted coupler jack, for use with Y-ConUSB-Adapter-20 and Y-ConFlange-10.

SPECIFICATIONS

- Operating Temp. -25°C ~ +80°C

Y-CON USB-PCB-21

DESCRIPTION

USB-B PCB mounted coupler jack, for use with Y-ConUSB-Adapter-20 and Y-ConFlange-10.

SPECIFICATIONS

- Operating Temp. -25°C ~ +80°C



¹⁾ cable according to Y-Con recommendation - on request



INDUSTRIAL RJ45 CONNECTORS Y-CON

YED-V1-2|3

TECHNICAL DATA ARE SUBJECT TO ALTERATION WITHOUT PRIOR NOTICE

YAMAICHI ELECTRONICS
Deutschland GmbH
Concor Park
Bahnhofstraße 20
85609 Aschheim-Dornach
Germany

Phone +49 (0)89 45109-0
Fax +49 (0)89 45109-110
E-Mail sales@yamaichi.de
Web www.yamaichi.de

YAMAICHI ELECTRONICS
Italia s.r.l.
Centro Direzionale Colleoni
Via Colleoni, 1
Palazzo Taurus Ing. 1
20864 Agrate Brianza (MB)
Italy

Phone +39 039 6881-185
Fax +39 039 6892-150
E-Mail sales@yamaichi.it
Web www.yamaichi.it

YAMAICHI ELECTRONICS
GB Ltd.
6 The Clockhouse
Stratton Park
Micheldever
Hampshire SO21 3DP
Great Britain

Phone +44 (0)7808 493377
Fax +44 (0)1962 774902
E-Mail sales@yamaichi.co.uk
Web www.yamaichi.co.uk

YAMAICHI ELECTRONICS
Israel

P.O. # 66
Palmachim 7689000
Israel

Phone +972 54 20444 23
Fax +972 88 664 344
E-Mail sales@yamaichi.co.il
Web www.yamaichi.co.il